

Design & Construction of Combination Recreation & Library Facility at NFWC

CITY OF NORFOLK



AUGUST 15, 2024



your project team

meet the team

MARK OLMSTEAD, DBIA, LEED AP
EXECUTIVE OVERSIGHT

MEB



TRIP SMITH, DBIA, LEED AP
DESIGN-BUILDER// PROJECT EXECUTIVE

MEB



STEFON ARTIS
CONSTRUCTION PROJECT MANAGER

MEB



CHAD POULTNEY, PE, LEED AP
DESIGN PRINCIPAL//PROJECT MANAGER

Clark Nexsen



SCOTT BOYCE, AIA, LEED AP BD+C
PROJECT ARCHITECT

Clark Nexsen



ERIN HORTON, PLA, ASLA, LEED AP BD+C
SENIOR LANDSCAPE ARCHITECT

Clark Nexsen



ANGIE BROSE, AIA, LEED AP
LIBRARY ARCHITECT

Clark Nexsen



BRIAN TURNER, PE, CEM, BEMP, CRM, LEED AP BD+C
SUSTAINABILITY LEADER

Clark Nexsen



DOUG WILL, PE
CIVIL ENGINEERING

MSA, PC



JEFF NODORFT, PE
AQUATICS CONSULTANT

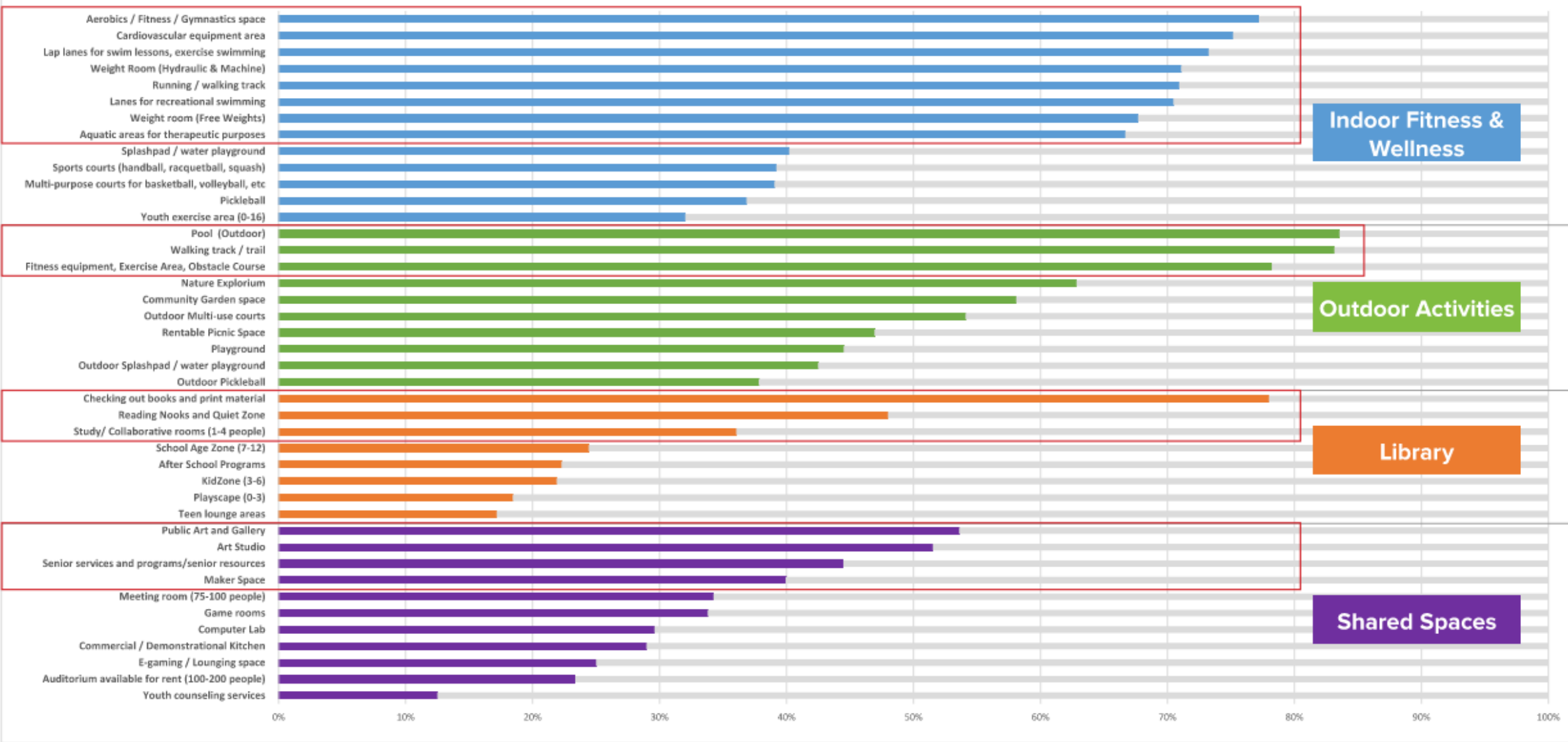
Counselmen Hunsaker



program

Survey Results

New Facility Activities



DEPT.	PROGRAM GROUP	DESCRIPTION	NOTES	QTY DIM	SF PER	TOTAL SF
REC	AQUATICS	First Aid Room	Requires visual privacy from adjacent spaces	1 10 x 10	100	100
REC	AQUATICS	Lifeguard Break Room		1 12 x 12	144	144
REC	AQUATICS	Natatorium	25 yard 8-lane lap pool (77-82 degrees) w/ ADA access and electronic starting blocks and scoreboard Therapy pool (89-94 degrees) w/ ADA access Lazy river (80-82 degrees) Indoor splash pad with water slides 250 person seating capacity for spectators during competitive swim meets Mech/pumps and chemical storage	1 138 x 140	19,320	19,320
REC	AQUATICS	Pool Classroom/Team Meeting Room	Holds staff meetings and training classes	1 20 x 30	600	600
REC	AQUATICS	Pool Party Activity Room	Noise traveling into adjacent spaces must to be minimized	1 20 x 25	500	500
REC	AQUATICS	Office - Pool Mgr. & Lifeguard Staff	1 closed office, 2 open offices High visibility from lifeguard office into natatorium	1	250	250
	AQUATICS	Natatorium Storage	Stores rescue tubes, dummies, rescue boards, defibrillator machines, books, manuals and DVD's for pool classroom/team meeting room	1	250	250
REC	FITNESS	Cardio Room	Bikes, rowing machines, stair climbers, treadmills, ellipticals, etc. Virtual 'nooks' should also be considered.	1	5,000	5,000
REC	FITNESS	Elevated Indoor Running Track		1		4,500
REC	FITNESS	Fitness Class Room	Aerobics, barre, Thai chi, other programmed classes.	3 25 x 45	1,125	3,375
REC	FITNESS	Gymnasium - w/ 1 Basketball Court	With bleacher seating for 250-300 that can telescope flat against the wall	1 104 x 106	11,024	11,024
REC	FITNESS	Personal Trainer Assessment	Administers testing before workouts, by appointment Not gender specific One of these should also include first aid	3 10x12	120	360
REC	FITNESS	Weight Room	Weight machines and free weights	1 30 x 40	3,000	3,000
REC	FITNESS	Youth Drop-In Childcare Space	Noise traveling into adjacent spaces must to be minimized	1 20 x 25	500	500
REC	FITNESS	Fitness Class Room Storage		3 8 x 14	112	336
REC	FITNESS	Gymnasium Storage		1 12 x 25	300	300
REC	FITNESS	Office - Recreation	1 senior rec supervisor - closed office 1 supervisor - closed office 3 specialists - open offices	1 15 x 30	450	450
REC	LOCKERS	Locker Room - Men's		1 25 x 40	1,000	1,000
REC	LOCKERS	Locker Room - Women's		1 25 x 40	1,000	1,000
REC	LOCKERS	Locker Room/Restroom - Gender Neutral		3 10 x 10	100	300
REC	LOCKERS	Sauna - Men's		1 12x12	144	144
REC	LOCKERS	Sauna - Women's		1 12x12	144	144

Program – Library, Shared Spaces

Combination Recreation and Library Facility

5/10/2023

LIBRARY	LIBRARY	Book Returns & Processing	Interior book return area	1 10 x 10	100	100
LIBRARY	LIBRARY	Workroom		1 20x24	480	480
LIBRARY	LIBRARY	Drive Through Book Drop	Covered and with drawer	1 10 x 10	100	100
LIBRARY	LIBRARY	Information Areas (not at lobby)	Two throughout the facility	2 15 x 15	225	450
LIBRARY	LIBRARY	Stacks	45,000 items (books and materials) - limit UV light on materials (all areas) Broken into three divisions, approximately: 60% Adult, 30% Juvenile, 10% Young Adult	1	5,000	5,000
LIBRARY	LIBRARY	Seating Areas	Casual seating with variable height seating options for book reading and tablet use, spread throughout stacks; adjacent to exterior windows; not adjacent to kid zone	1	1,500	1,500
LIBRARY	LIBRARY	Seating Nooks	More private than seating areas for reading and laptop/tablet use	6	50	300
LIBRARY	LIBRARY	Kid Zone	4-8 year olds Exterior door required to access nature explorium	1	250	250
LIBRARY	LIBRARY	Youth Services prep Room	Requires adjacency to storage space	1	200	200
LIBRARY	LIBRARY	Storage Space	Area to store materials, etc. for kid zone and program room	1	1,000	1,000
LIBRARY	LIBRARY	Receiving Area		1	500	500
JOINT	LOBBY	Shared Front Desk	To include Recreation check-in and Library circulation	1 12 x 15	180	180
JOINT	LOBBY	Lobby/Front Desk Storage		1 6 x 10	60	60
JOINT	LOBBY	Restroom - Public	Family & Gender-neutral If permitted by building code, all public restrooms to be single room ADA compliant, and include 1 toilet and 1 urinal	8	80	640
JOINT	OFFICES	Joint Offices – Staff - All floors	Combination closed and open office spaces P+R -1 closed office - Facility Manager -5 pods Citywide Athletics -1 closed office - Supervisor -6 pods Library -3 closed offices - Branch Mgr., Asst. Mgr., Youth Supervisor -12 pods	1	7,000	7,000
JOINT	OFFICES	Lounge - Staff		1 15 x 15	225	225
JOINT	OFFICES	Restrooms - Staff		2	150	300
JOINT	PUBLIC / MEETING	Computer Lab	20-25 computers including charging stations and USB ports	1	1,000	1,000
JOINT	PUBLIC / MEETING	Computer Lab Work Room & Storage		1 10 x 14	140	140
JOINT	PUBLIC / MEETING	Program Room	Flexible seating arrangements	1	2,000	2,000
JOINT	PUBLIC / MEETING	Kitchen	For warming and serving, not full cooking	1 10 x 20	200	200

Program – Outdoor Program

VIA project #: 19045-15

Combination Recreation and Library Facility

5/10/2023

OUTDOOR AMENITIES PROGRAM			
DEPT.	PROGRAM GROUP	DESCRIPTION	NOTES
REC	OUTDOOR	Open Area / Green Space	
REC	OUTDOOR	Play fields	Regulation multi-purpose field for soccer, football, and lacrosse. Overlapping softball/baseball diamond
REC	OUTDOOR	Tennis(x4 courts)/Pickle Ball(x8 courts)	
REC	OUTDOOR	Walking Path	Loop Walking path around grounds.
REC	OUTDOOR	Exercise Course	Fitness Equipment, Exercise, Obstacle Course
REC	OUTDOOR	Playground (6-12 year olds)	Not adjacent to 2-6 year old playground
REC	OUTDOOR	Playground (2-6 year olds)	Not adjacent to 6-12 year old playground
JOINT	OUTDOOR	Parking - as required by zoning/ZA	Inclusion of Electric Vehicle charging stations
JOINT	OUTDOOR	Bike repair station and racks	
LIBRARY	OUTDOOR	Nature Explorium	Outside Facility or on Roof Accessible from Kids Zone
LIBRARY	OUTDOOR	Outdoor seating and programming space	
LIBRARY	OUTDOOR	Indoor/outdoor meeting room space that can be modular.	
LIBRARY	LIBRARY	Library Pick-up Lockers	Requires Power

CONNECTING YOUR GOALS //

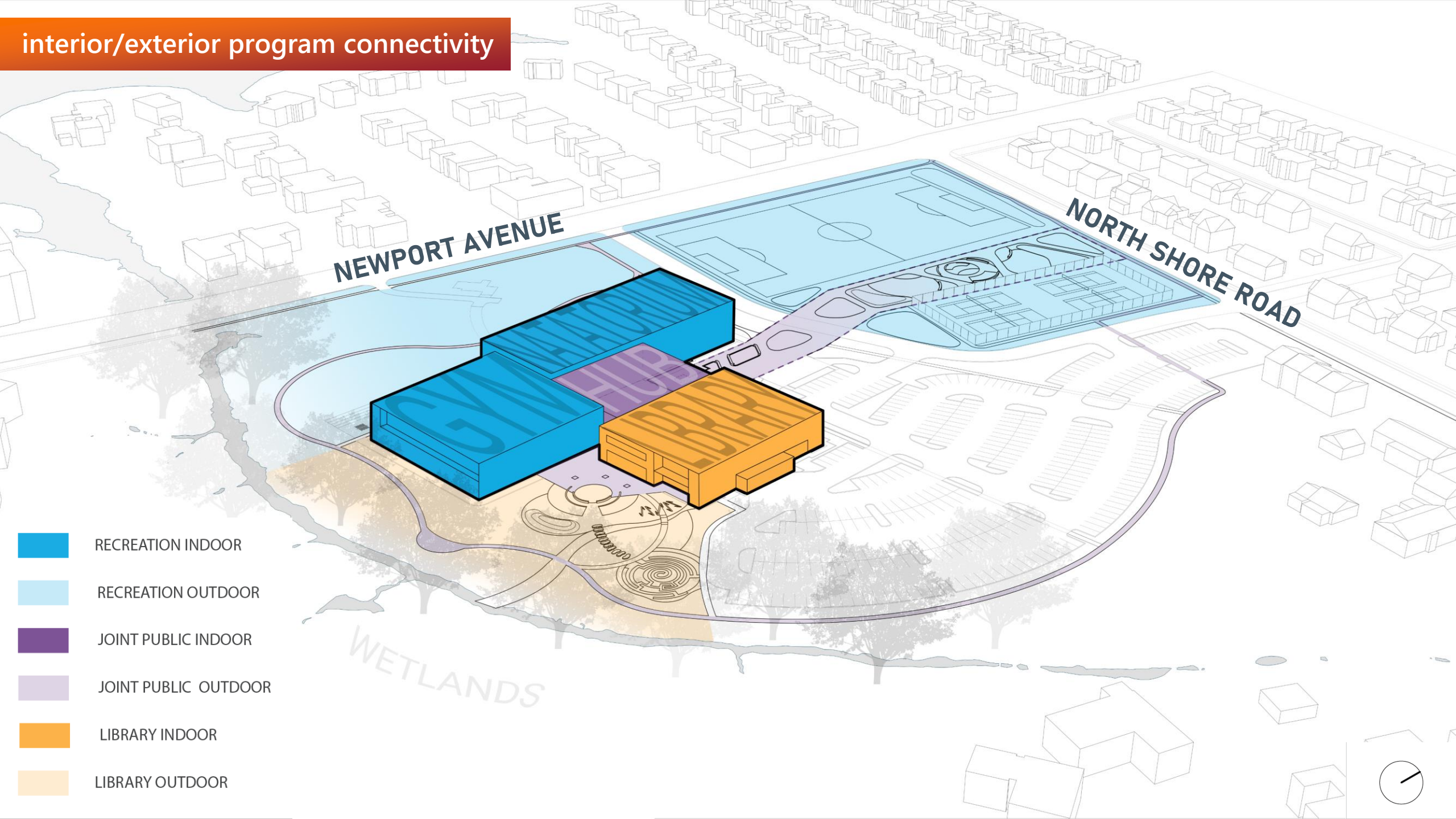
overall site design approach

Exterior Design Goals : “what we heard”

- Preserve the community’s highly regarded greenspace in the northwest corner of the site
- Locate outdoor amenities to engage & invite the community in
- Connect to the wetlands and natural beauty of the site
- Create an “enduringly beautiful” building
- Use building materials that seamlessly fit into the surrounding neighborhood



interior/exterior program connectivity



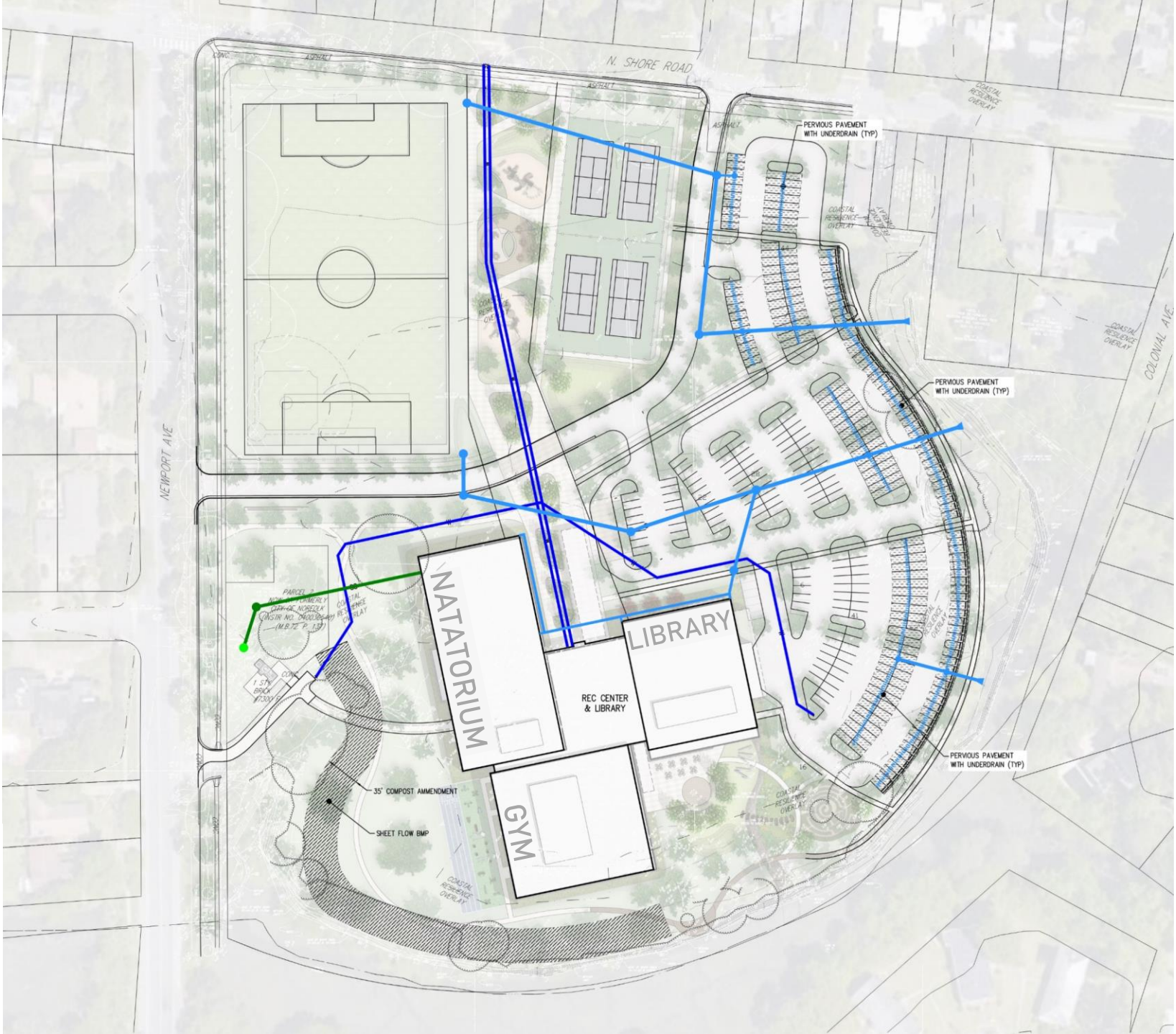


master plan



- 1 ENTRY PLAZA
- 2 PLAYGROUND (6-12 YEAR OLDS)
- 3 PLAYGROUND (2-6 YEAR OLDS)
- 4 PICNIC AREA
- 5 MULTI-SPORT PLAYFIELD
(REGULATION SIZE SOCCER, LACROSSE,
FOOTBALL, BASEBALL / SOFTBALL)
- 6 BASEBALL / SOFTBALL BACKSTOP
- 7 SITE FENCE
- 8 TENNIS / PICKLEBALL COURTS
- 9 RAISED PEDESTRIAN CROSSING
- 10 DROP-OFF WITH BENCH SEATING
- 11 BIKE RACKS + BIKE REPAIR STATION
- 12 COVERED MAIN ENTRY
- 13 COVERED ENTRY
- 14 INDOOR / OUTDOOR MEETING SPACE
WITH FLEXIBLE SEATING
- 15 NATURE EXPLORIUM
- 16 BOARDWALK + OVERLOOK WITH VIEWS TO
WETLANDS
- 17 WALKING PATH WITH EDUCATIONAL SIGNAGE
(1K LOOP)
- 18 OUTDOOR FITNESS / OBSTACLE COURSE
WITH 40 YD SPRINT TRACK
- 19 POOL CHEMICAL STORAGE ACCESS
- 20 POTENTIAL FUTURE OUTDOOR AMENITY
- 21 OPEN AREA / GREEN SPACE
- 22 EXISTING TREE(S) TO PRESERVE
- 23 ENTRY SIGNAGE
- 24 VEHICULAR ACCESS POINTS
- 25 PARKING (INCLUDES EV CHARGING SPACES)
WITH SITE LIGHTING
- 26 SIDEWALK CONNECTIONS
- 27 LIBRARY BOOK DROP + PICK-UP LOCKERS

site plan



exterior design approach

“Enduringly beautiful” buildings are timeless;
they sit effortlessly in the landscape appearing to belong.
Their materials are durable and familiar, and they look at home
in their surrounding environment and community.

THESE ARE THE PRINCIPLES WE USED TO DESIGN THE
NEW COMBINATION RECREATION & LIBRARY FACILITY.



view from north shore road



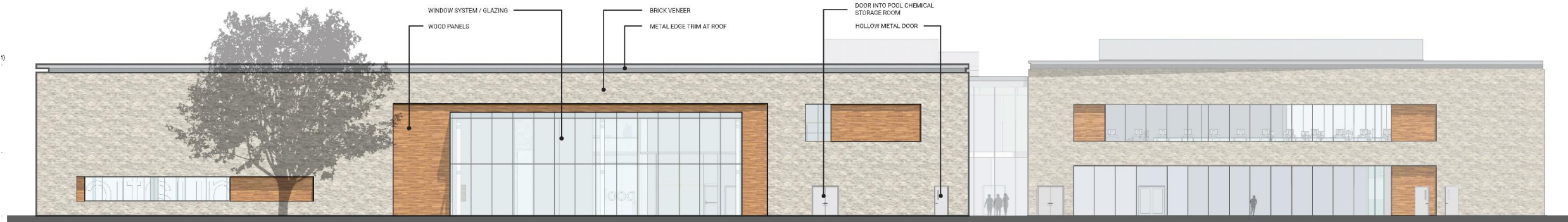
courtyard

view from newport avenue

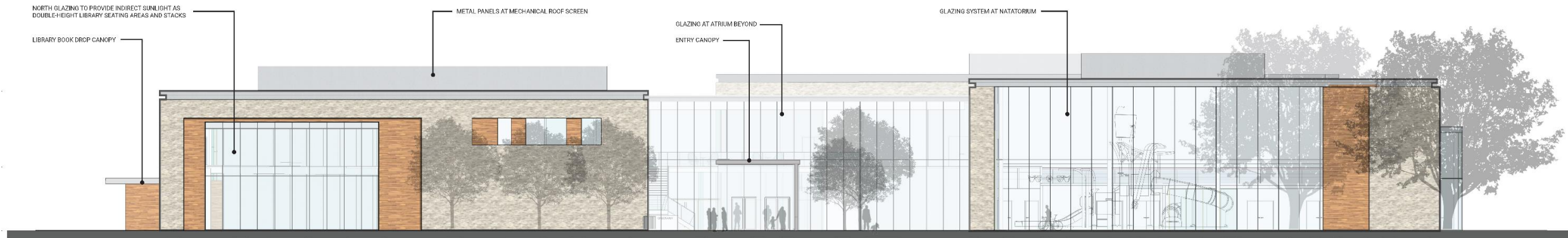




view from wetlands

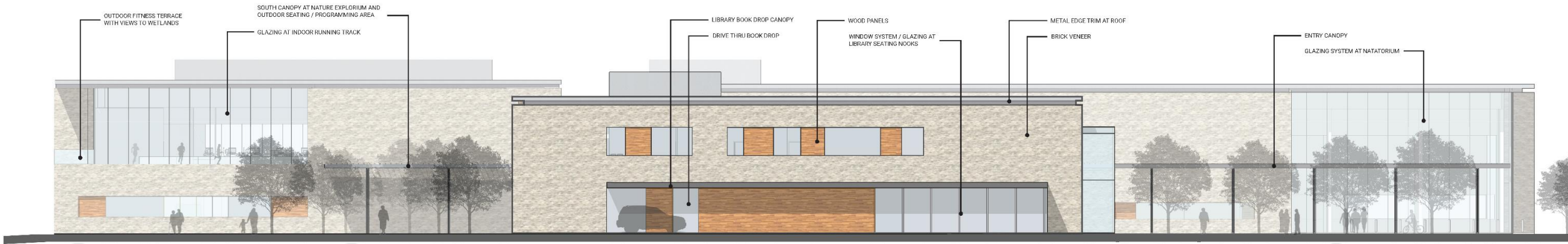


WEST ELEVATION



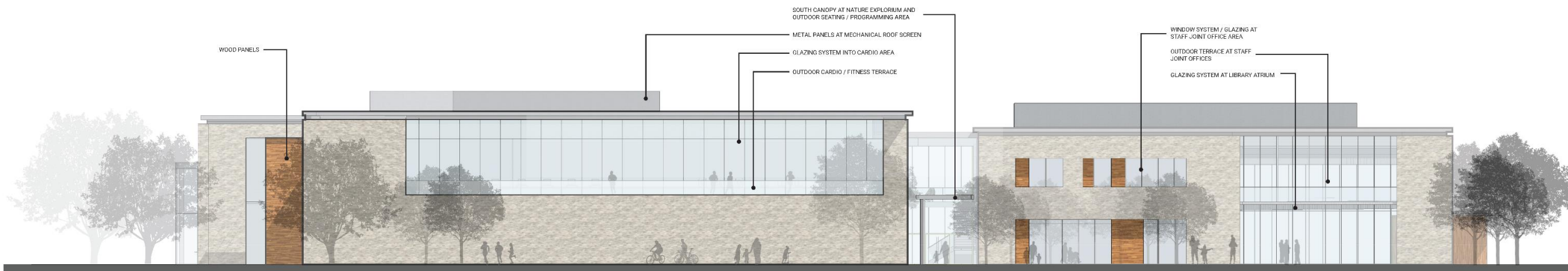
NORTH ELEVATION





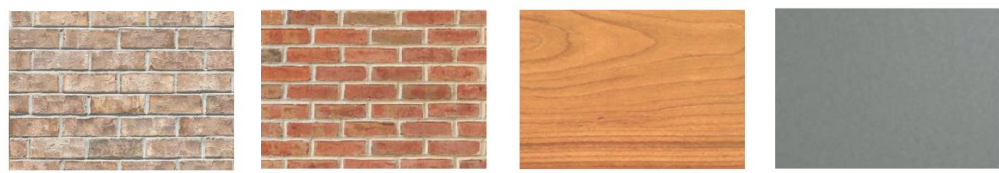
GYMNASIUM LIBRARY NATATORIUM

EAST ELEVATION



GYMNASIUM LIBRARY

SOUTH ELEVATION





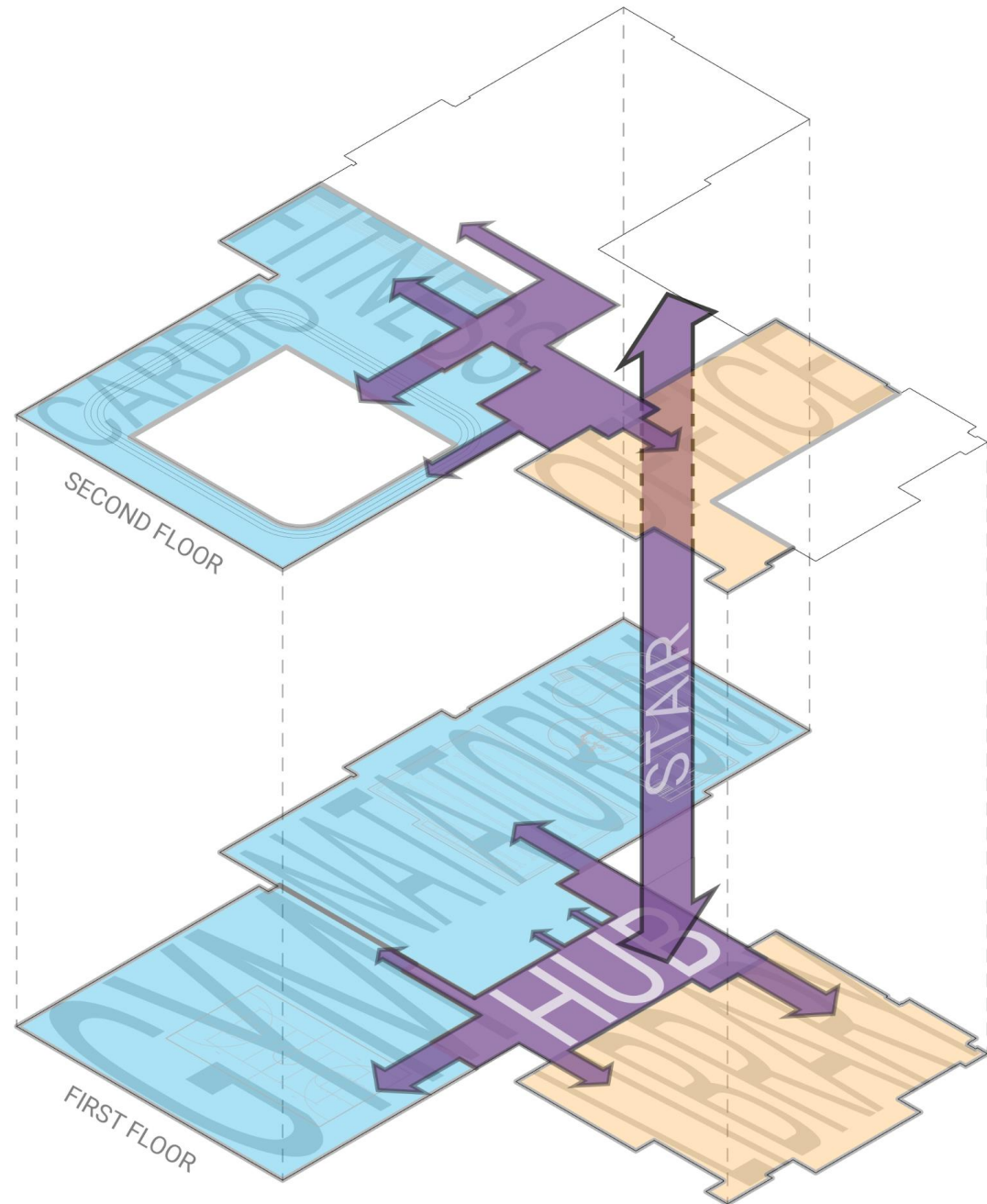
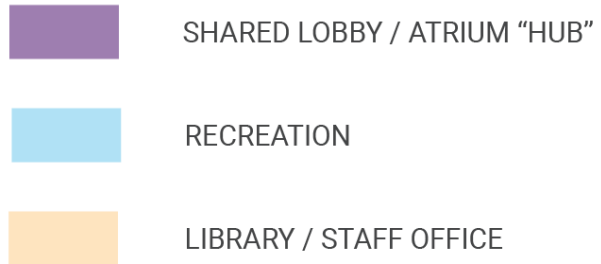


CONNECTING YOUR GOALS //

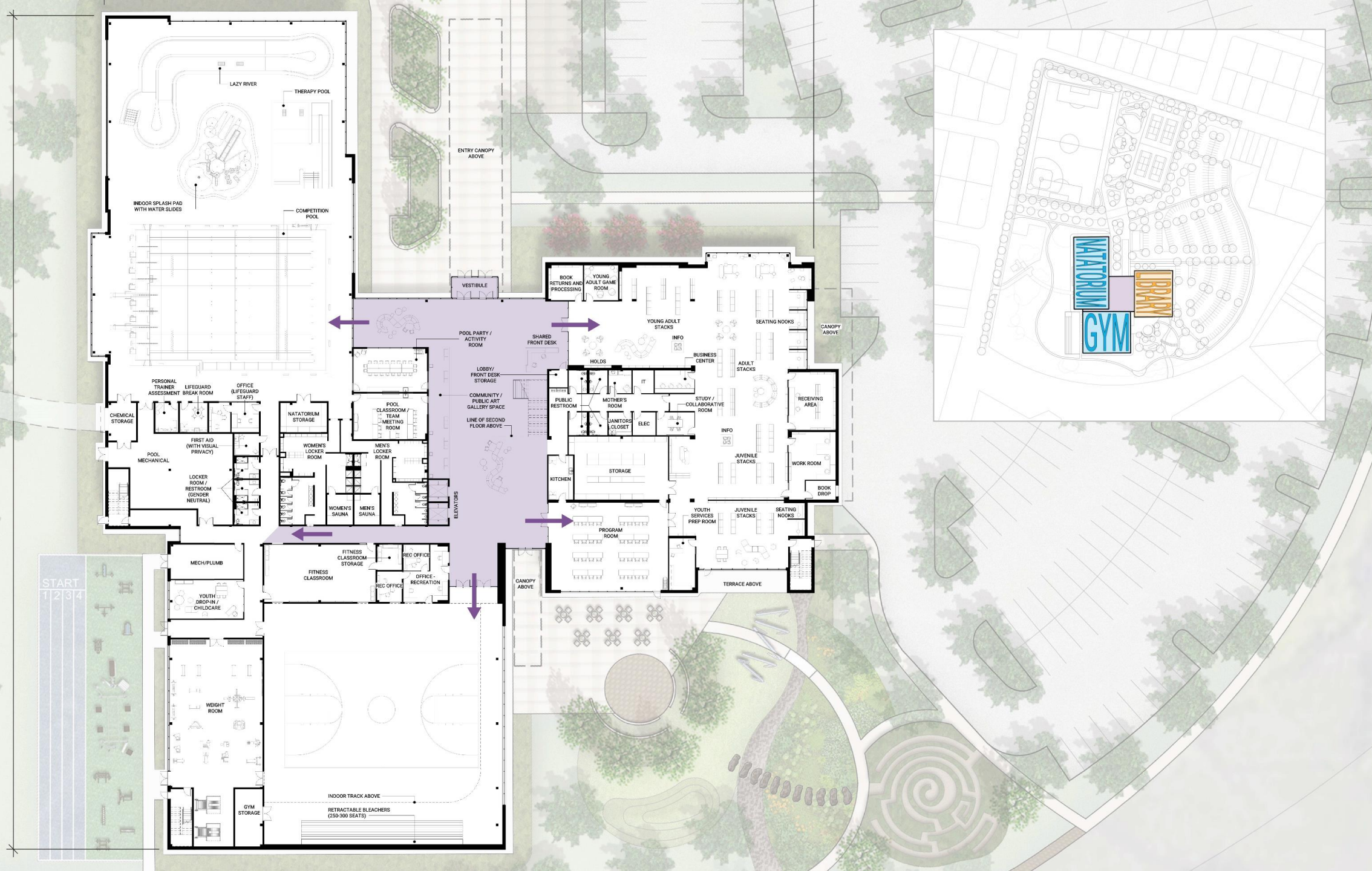
interior program + design approach

Interior Layout : Create “Central Activity Hub”

- maximize synergy & connection between departments
- provide acoustical separation
- allow departments to operate on varying schedules
- connect interior & exterior program elements
- intuitive wayfinding

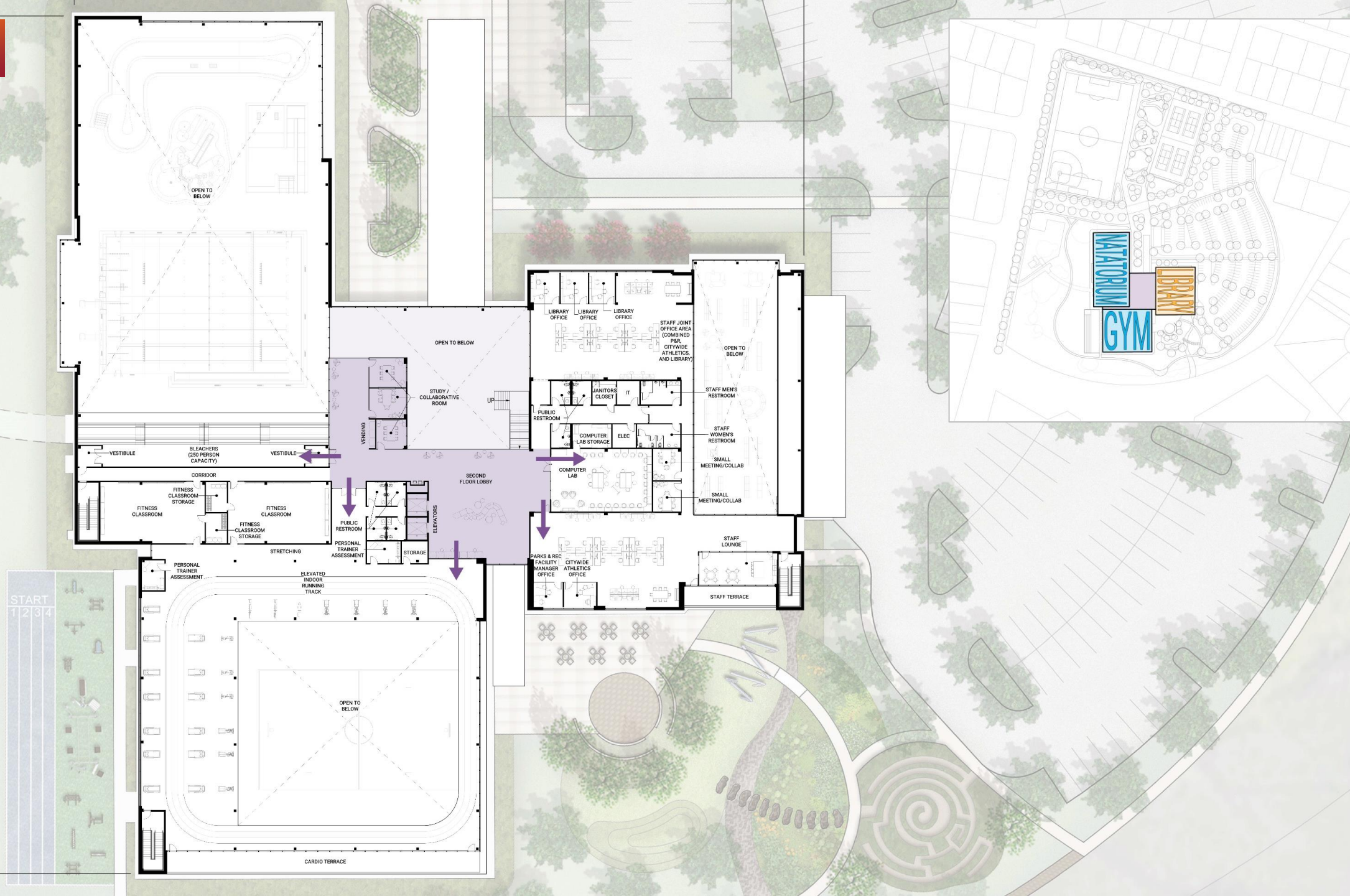


first floor

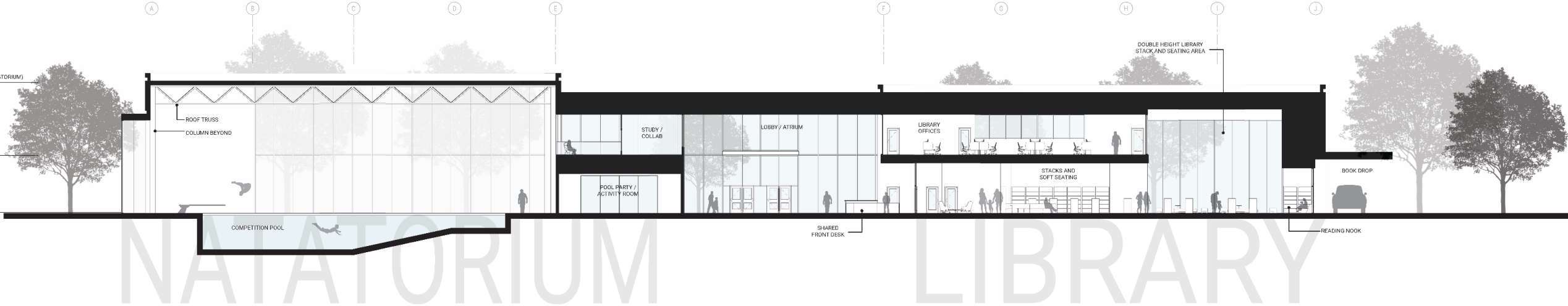




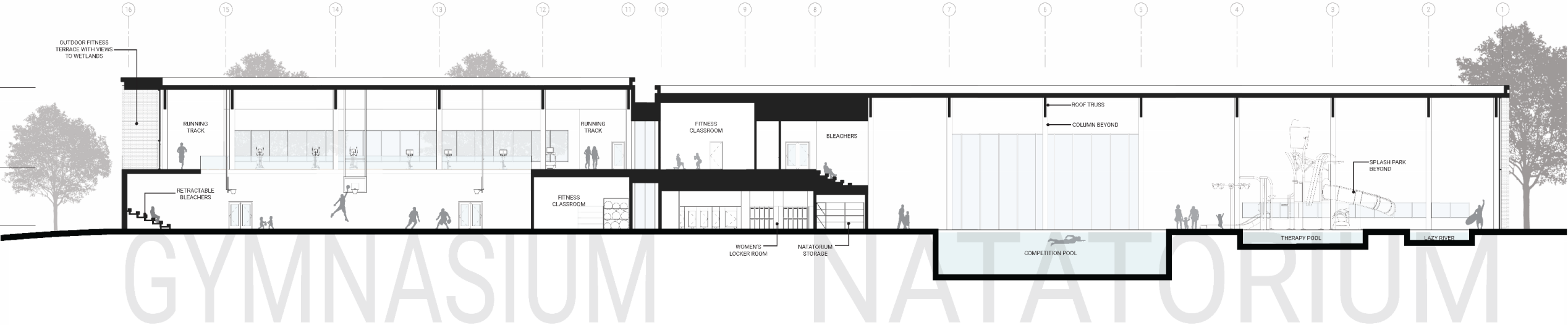
second floor



building sections



BUILDING SECTION A



BUILDING SECTION B

library

library & shared spaces – level 1





drive-thru book drop



library outdoor amenities



NATURE EXPLORIUM

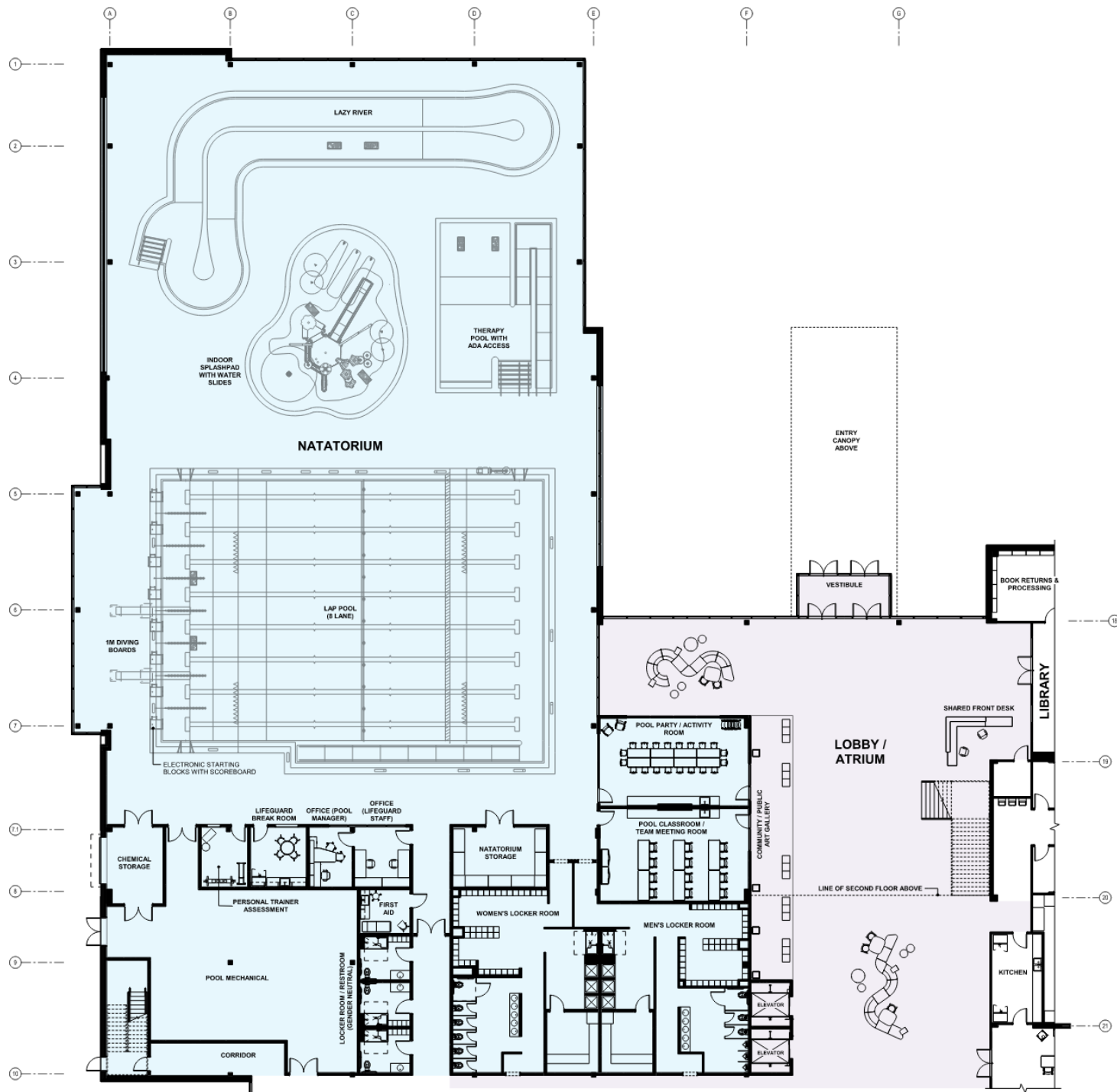
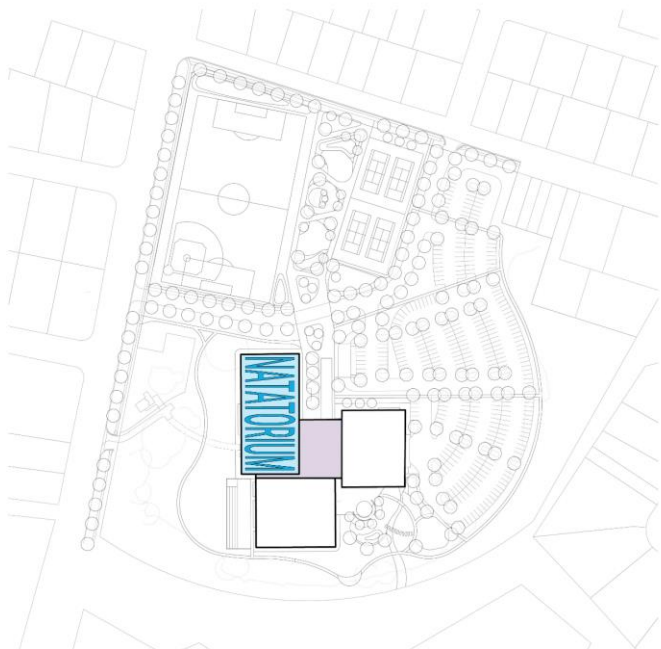
- 1 COVERED ENTRY
- 2 INDOOR / OUTDOOR MEETING SPACE
WITH FLEXIBLE SEATING
- 3 OUTDOOR CLASSROOM
- 4 LAWN WITH LANDFORMS
- 5 GARDENS
(SENSORY, POLLINATOR, BUTTERFLY)
- 6 DRY STREAMBED
- 7 HEDGE MAZE
- 8 BOARDWALK + OVERLOOK
WITH VIEWS TO WETLANDS
- 9 WALKING PATH WITH EDUCATIONAL SIGNAGE
+ FITNESS OPPORTUNITIES
- 10 PARKING + SITE LIGHTING
- 11 LIBRARY BOOK DROP + PICK-UP LOCKERS
- 12 EXISTING TREE(S) TO PRESERVE



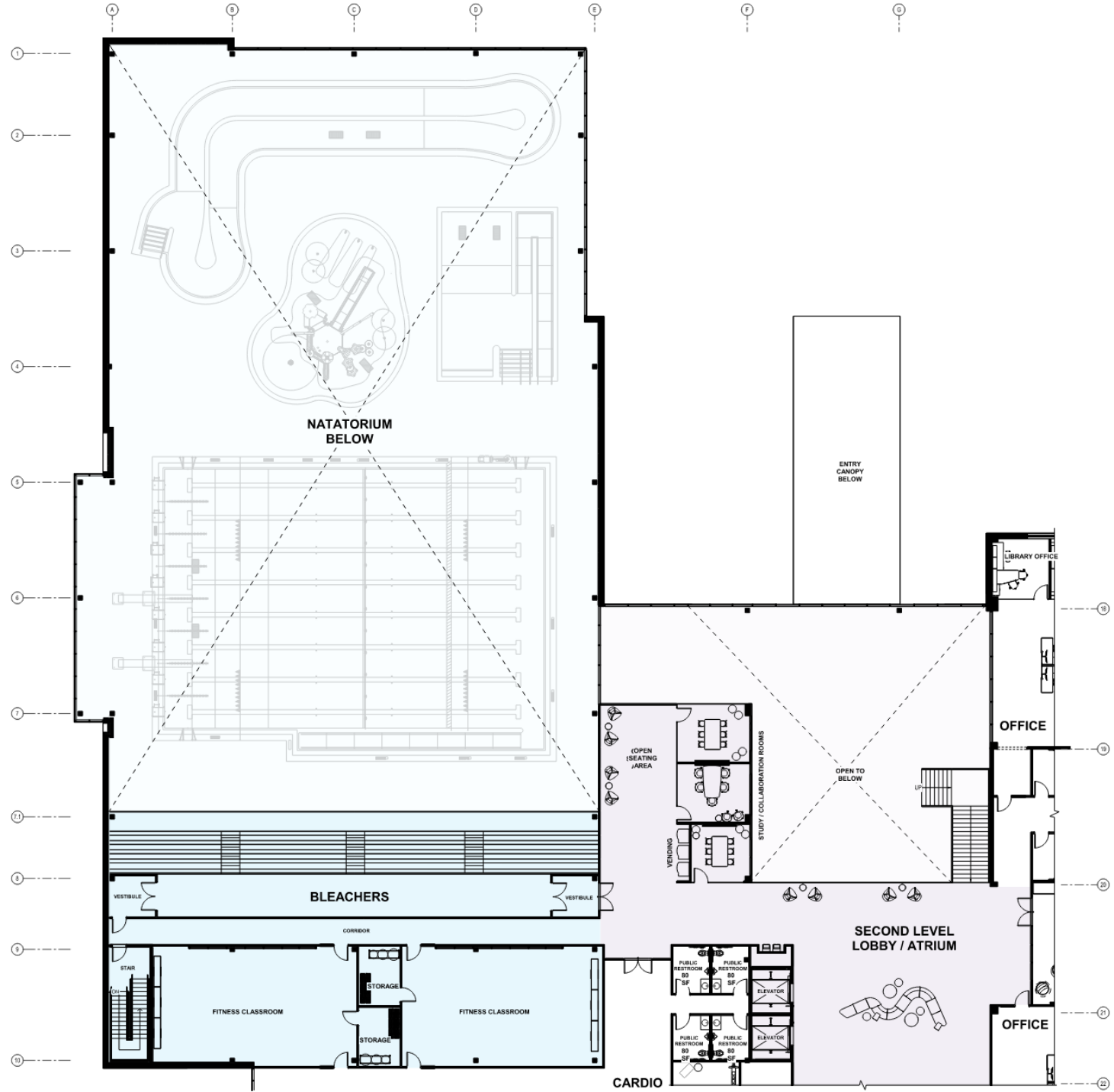
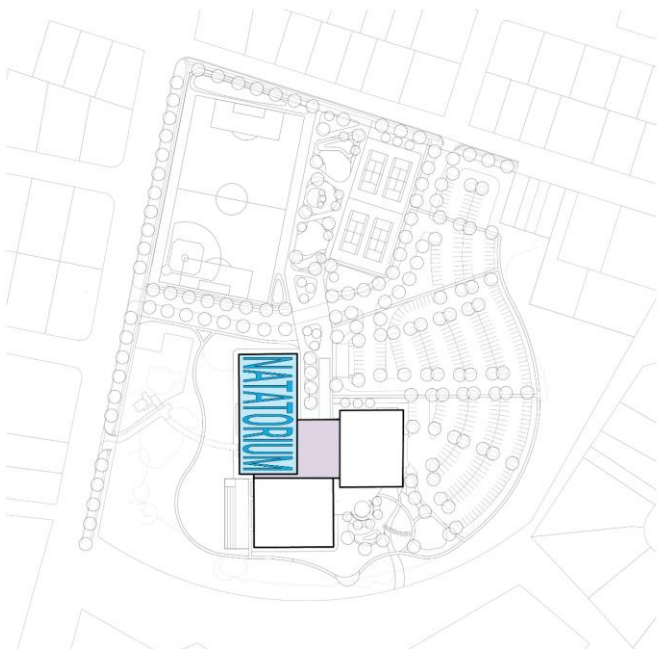


natatorium

natatorium – level 1



natatorium – level 2





aquatic views

Example Image from Similar Project



aquatic systems



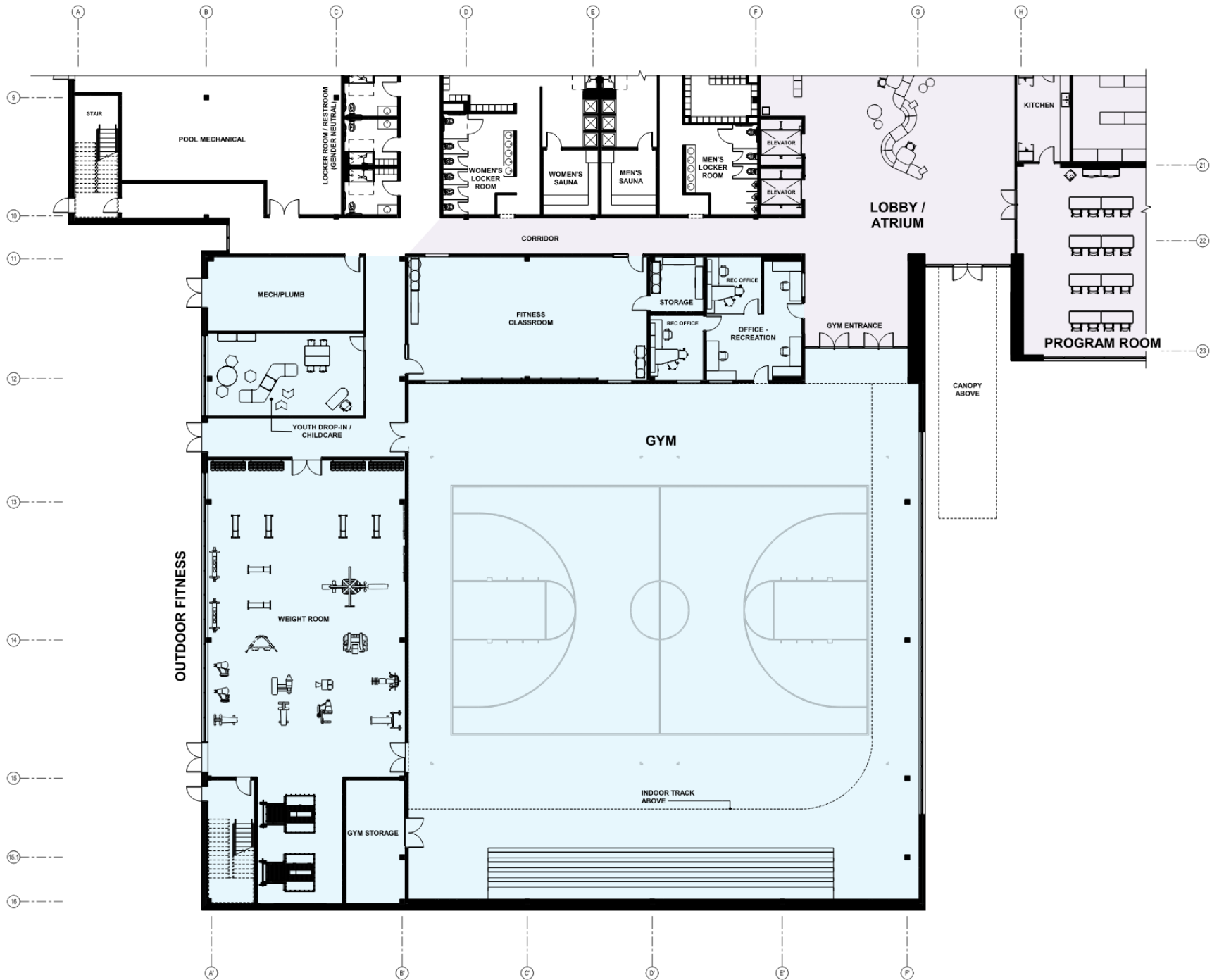
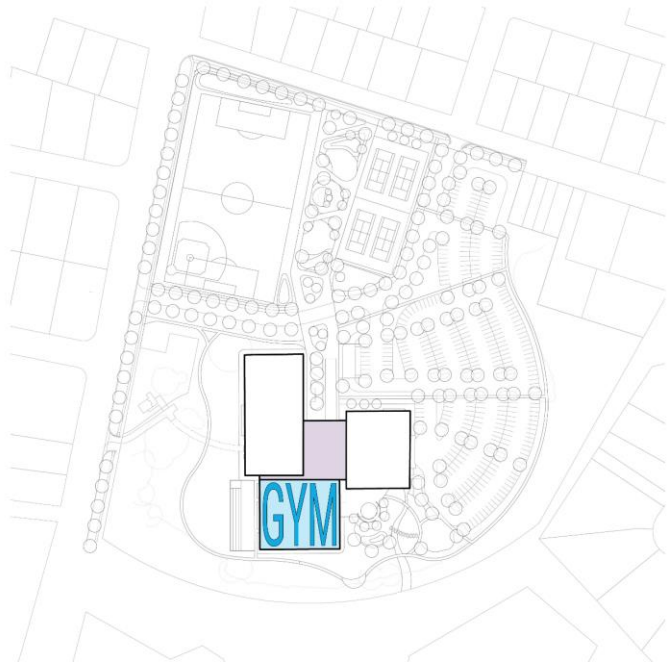
aquatic systems



Example Image from Similar Project

fitness center

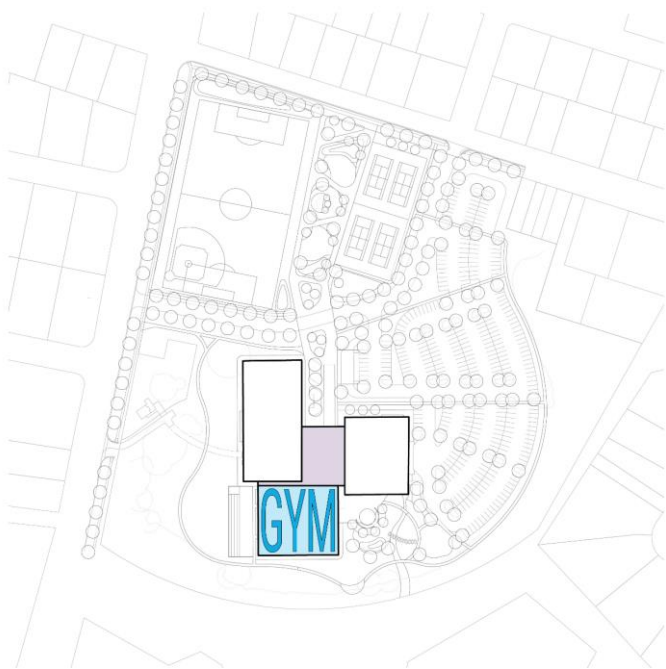
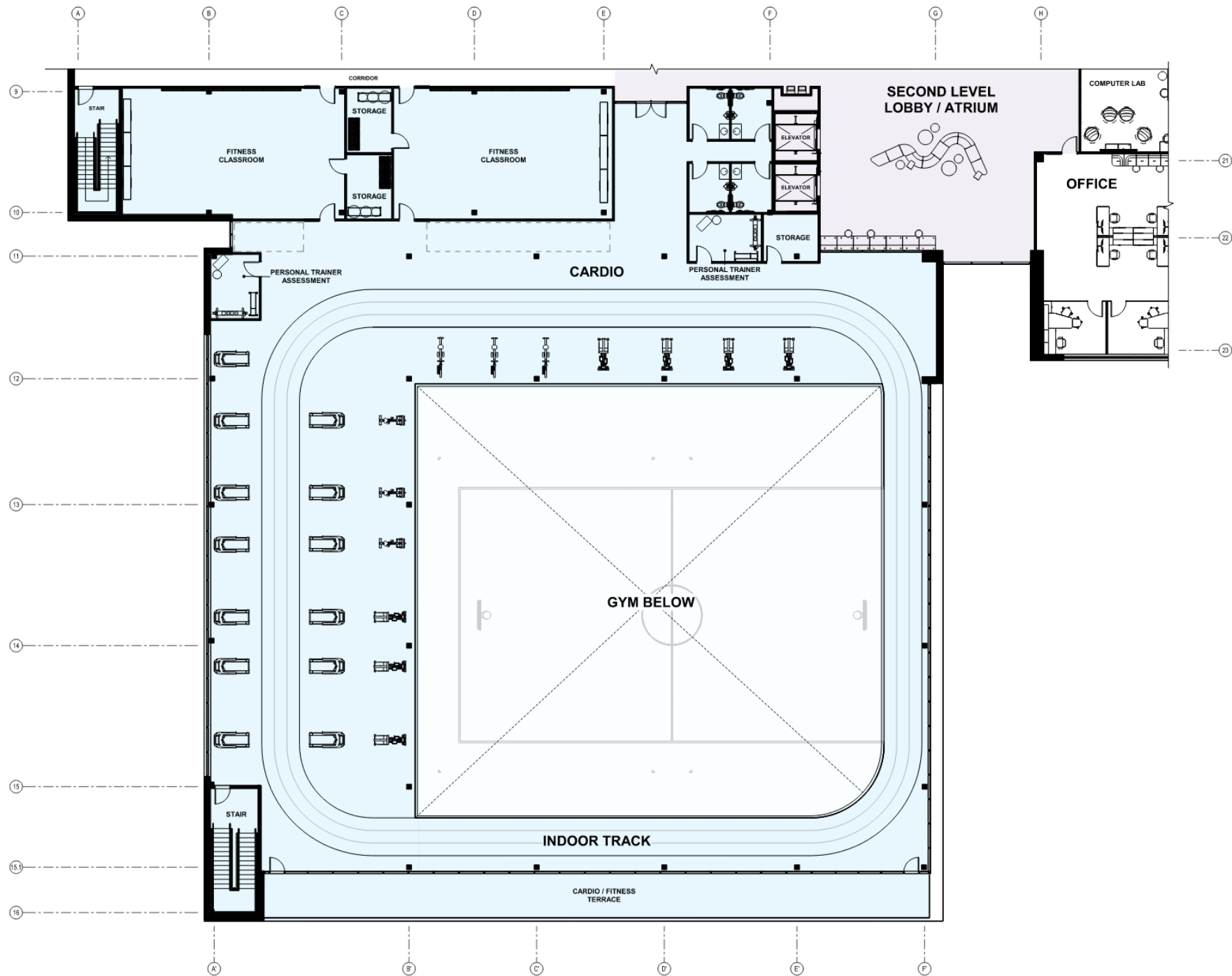
fitness center – level 1





Example Image from Similar Project

fitness center – level 2



indoor track



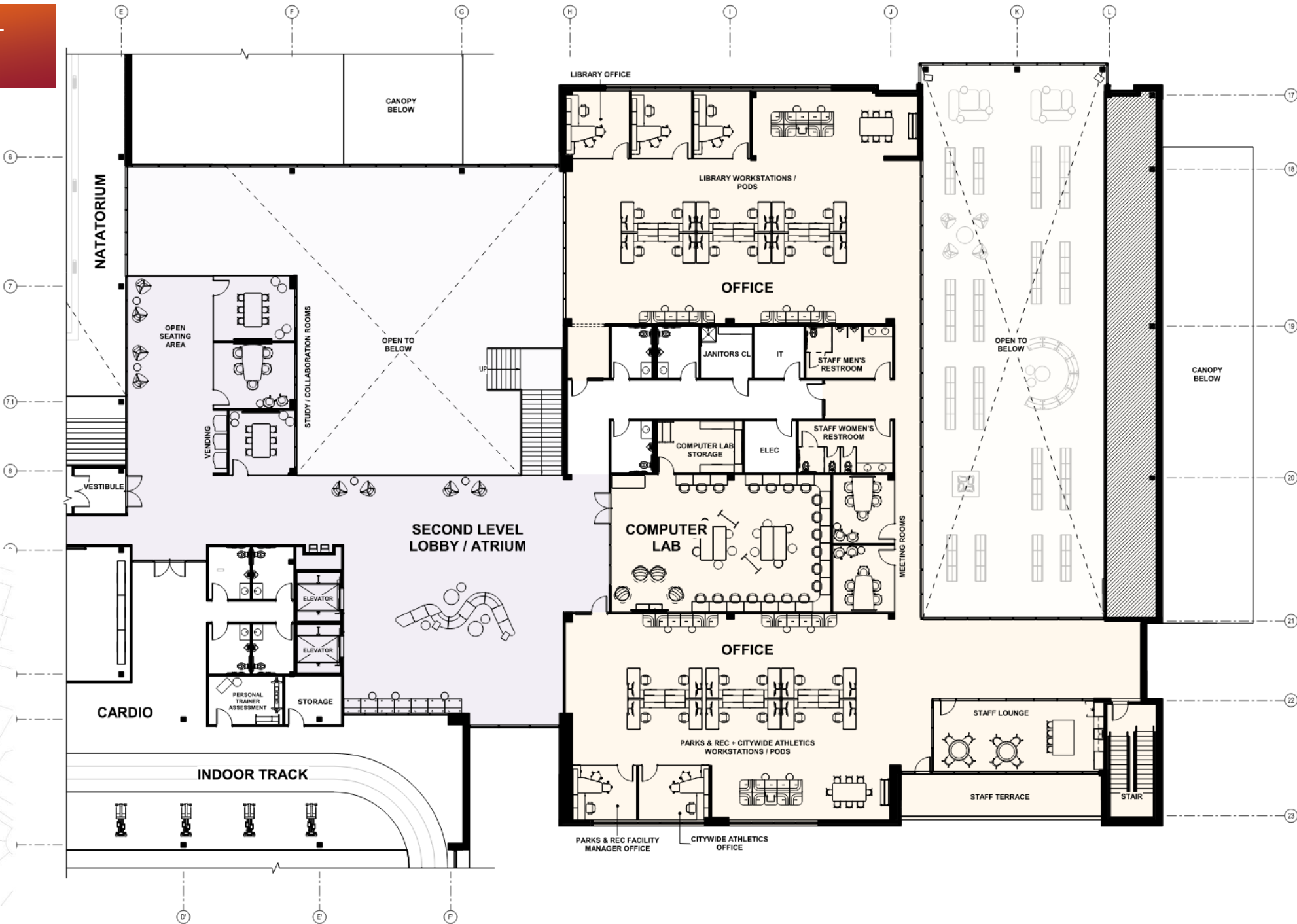


fitness terrace



office area

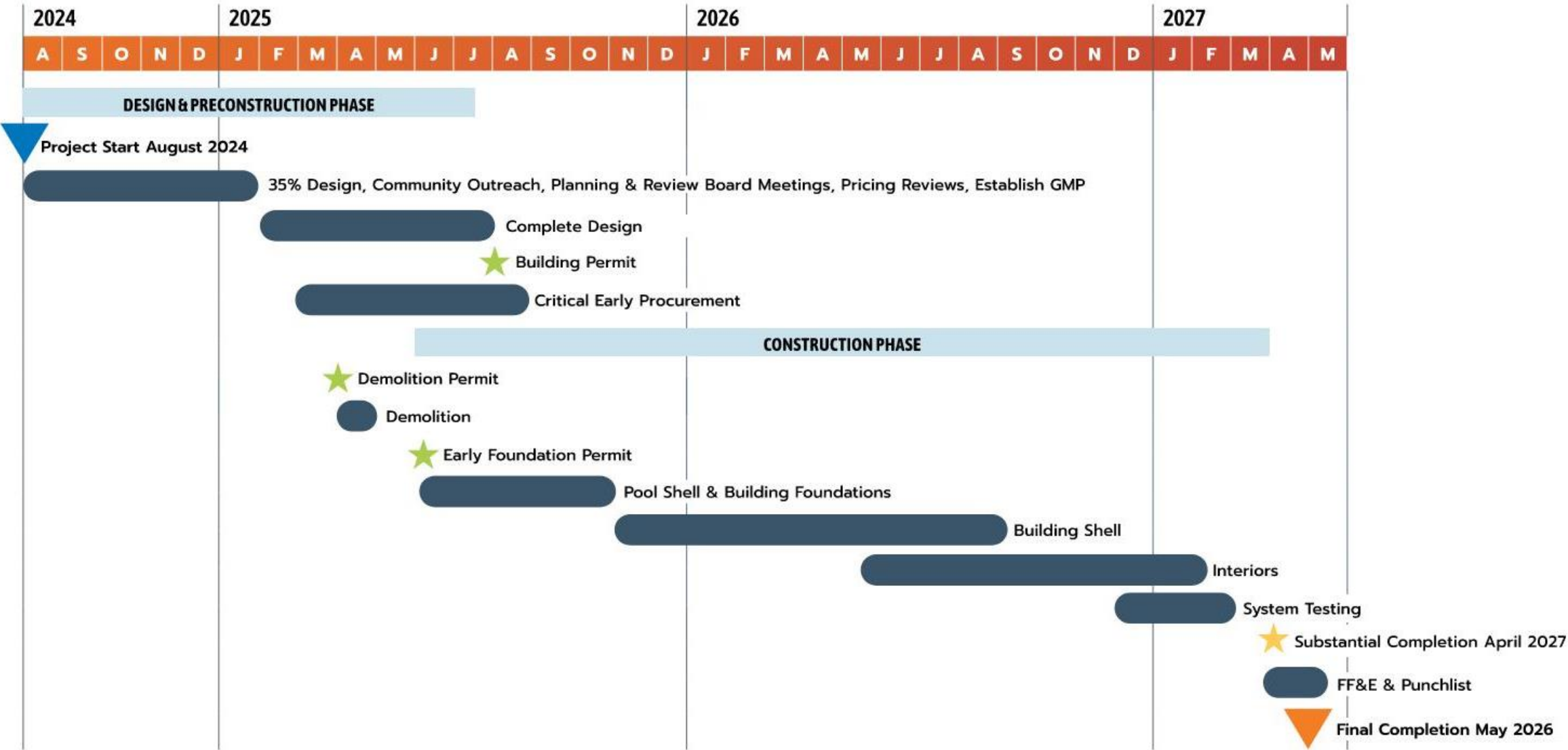
office & shared spaces –
level 2





schedule

milestones





build connections
with us.